

The Brent Health Partners Forum

6pm to 8pm Wednesday 12th February
Registration and refreshments from 5.30pm

Come and find out more about better integrated care in Brent.

We will be focusing on the integration of social care and health services.


- What is integrated care?
- Why is it important?
- What does it mean for all of us?

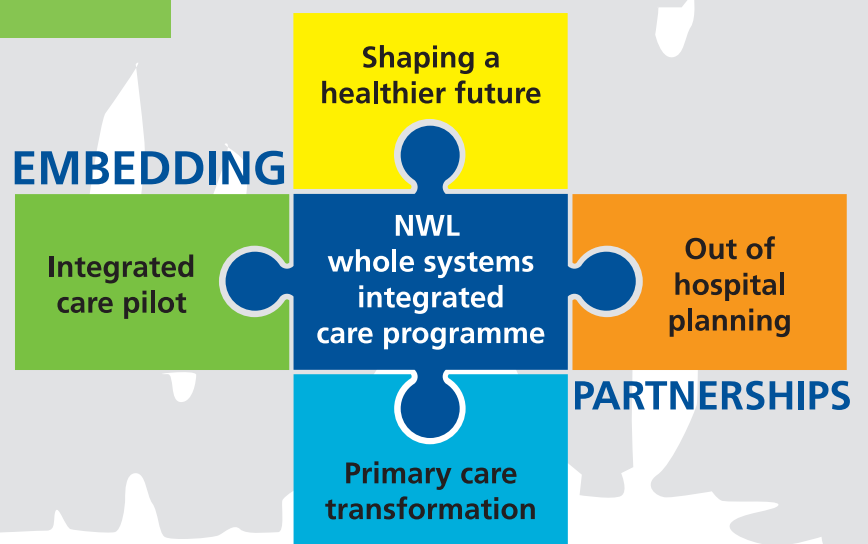
You will have the opportunity to ask questions and share your ideas on how we can progress integrated care in Brent.

Venue: Sattavis Patidar Centre
Forty Avenue j/w The Avenue
Wembley, Middlesex HA9 9PE

Parking at rear of venue.

 Wembley Park

 83, 182, 206 and 245



To RSVP or for more information, please email: brentccg.engagement@brent-harrowpcts.nhs.uk or call 020 8795 6107 / 6122.

Refreshments will be provided.

Please advise of any specific accessibility issues and special dietary requirements.

Please provide own translators if required.